

# Labtrack

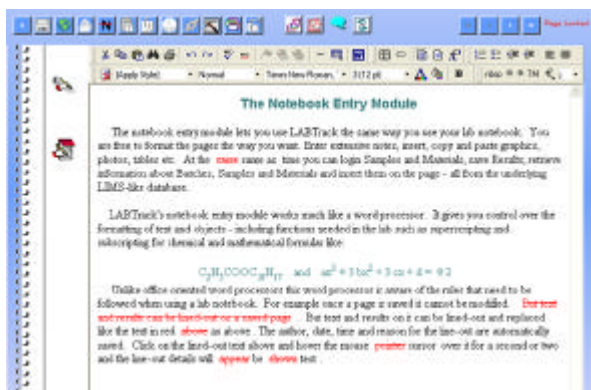


**An electronic lab notebook that's easy to use**

LABTrack represents one of the most exciting and promising trends in scientific and engineering research - the move from paper laboratory notebooks to Electronic Laboratory Notebooks (ELN).

**Like a paper notebook**

LABTrack is the only ELN that mirrors existing laboratory notebook practices, turning each page into a legally valid notebook entry.



**Familiar rules**

LABTrack utilizes the same rules that apply to paper notebooks. For example, if a researcher needs to correct data in a LABTrack notebook, the procedure is analogous to that of a paper notebook: the user lines-out the incorrect data and includes a note indicating why the change was made. LABTrack then uses electronic signature technology via passwords to record the user's identity as well as the date and time that the change was made.

**Intuitive interface**

Labtrack has an intuitive interface and makes it easy to include notes, chromatograms, spectra and chemistry drawing.

**Secure**

LABTrack has been designed to meet the unique legal requirements of the Life Science marketplace. Its built-in electronic signature (21 CFR Part 11) functionality and digital notarization enables compliance with FDA regulations. The contents of the page and a date/time stamp are "Fingerprinted" and retained in a secure manner. Digital notary services are available to LABTrack users through firms such as Surety.com and IP.com

**Share information**

LABTrack notebooks can be assigned to and shared amongst individuals, teams, or entire departments.

**Scalable**

Integrates with popular databases, such as Oracle, DB2 and SQL Server.

[www.chemistry-software.com](http://www.chemistry-software.com)